

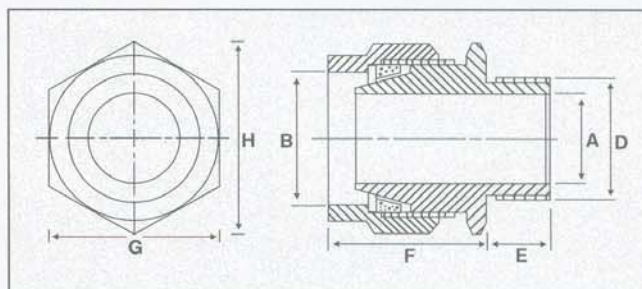
# BW BRASS GLAND



## BW BRASS GLAND

### BW GLAND FOR SWA CABLE

- To BS 6121 : Part 1
- Suitable for single wire armoured, plastic or rubber sheathed cables
- Application - for use in dry, indoor situations
- Low cost two part design
- Shroud may be used for additional ingress protection
- IP 54
- Finish : Natural Brass and also available in Electro Tinned and Nickel
- Threads : Entry threads are metric to BS3643 and are also available in Imperial (ET)
- Also available in Aluminium (BS 1474) cable glands



### ORDERING INFORMATION - CABLE AND GLAND DETAILS

Also available in CIEL (Cast Integral Earth Lug) For order Add suffix "C"

COMP. NO.	SIZE	CABLE DIMENSIONS ACCOMODATED			GLAND DIMENSIONS				
		DIAMETER		ARMOUR WIRE DIAMETER C mm	ISO ENTRY THREAD		APPROX LENGTH FROM SHOULDER F mm	HEXAGON SIZE	
		UNDER ARMOUR A MAX. mm	OVERALL B MAX. mm		DIA. D mm	LEN. E mm		ACROSS FLATS G mm	ACROSS CORNERS H mm
<b>BGB - 16</b>	16	8.60	13.50	0.90	16	10	21.00	20.00	23.00
<b>BGB - 20 S</b>	20 S	12.50	17.00	0.90 / 1.25	20	10	21.00	23.00	25.50
<b>BGB - 20</b>	20	14.40	20.50	0.90 / 1.25	20	10	23.00	25.00	27.30
<b>BGB - 25 S</b>	25 S	17.80	23.80	1.25 / 1.60	25	10	24.00	31.00	34.00
<b>BGB - 25</b>	25	20.40	27.00	1.25 / 1.60	25	10	26.00	34.30	38.50
<b>BGB - 32</b>	32	26.50	33.00	1.60 / 2.00	32	10	26.00	41.50	46.50
<b>BGB - 40 S</b>	40 S	31.00	37.00	1.60 / 2.00	40	10	30.00	45.00	50.00
<b>BGB - 40</b>	40	32.50	40.80	1.60 / 2.00	40	15	30.00	49.00	54.00
<b>BGB - 50 S</b>	50 S	37.80	48.00	2.00 / 2.50	50	15	32.00	58.00	65.00
<b>BGB - 50</b>	50	44.00	53.50	2.00 / 2.50	50	15	32.00	62.30	69.50
<b>BGB - 63 S</b>	63 S	50.50	60.50	2.50	63	15	35.00	70.00	78.00
<b>BGB - 63</b>	63	56.50	65.50	2.50	63	15	36.00	76.30	85.00
<b>BGB - 75 S</b>	75 S	62.50	72.00	2.50	75	15	40.00	85.00	95.00
<b>BGB - 75</b>	75	67.50	78.50	2.50 / 3.15	75	15	41.00	90.50	99.00
<b>BGB - 90</b>	90	80.00	94.00	3.15	90	20	42.00	112.00	125.00