

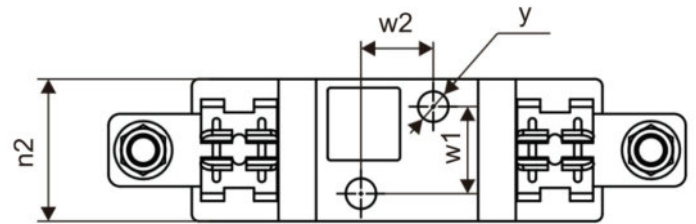
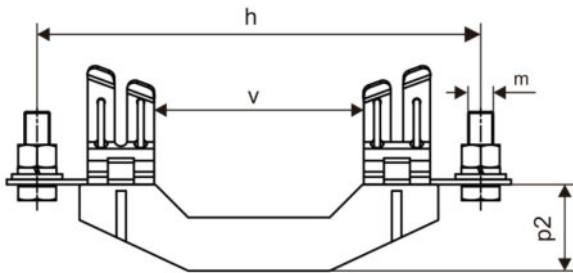
## NH00 Fuse Base 3 Pole

Type	NH00 3P
Class	gG , General Purpose, Fast Acting fuse.
Rated Voltage	AC690V (Fuse base)
Rated Current	160A
Breaking Capacity	20kA
Fuse Link Watts loss	≤12W
Fuse Base acceptable watts	≥12W
Standard	IEC (EN) 60269

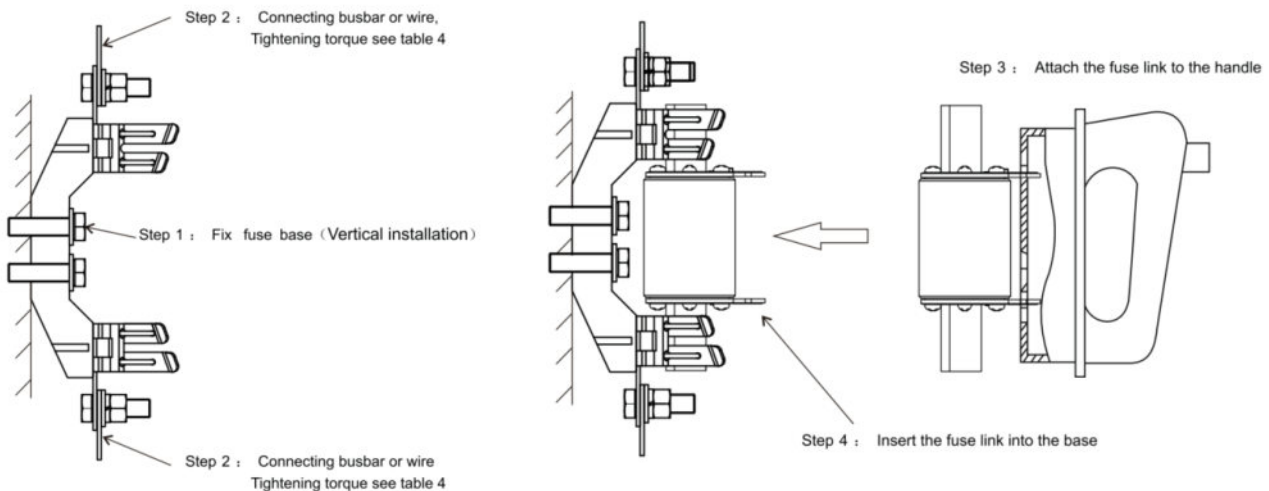


## NH00 Fuse base Dimensions

Label	h	v	p2	n2	w1	w2	y	m
Units (mm)	100±1.5	56.5±1.5		38max	0±0.7	25±0.7	7.5±0.5	M8



## Installation



BOLT	Torque
M8	10Nm
M10/M12	32Nm