

## Terminals

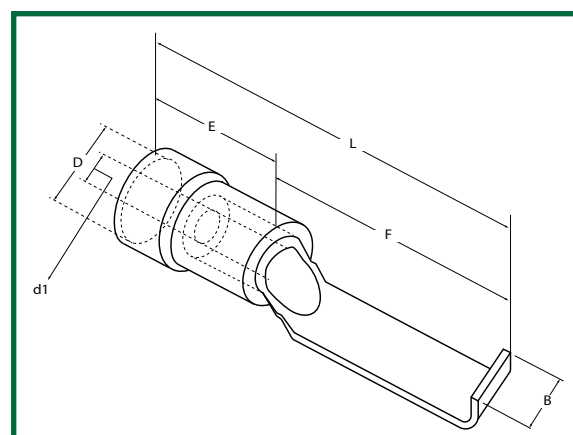
### Hooked Blade Terminals—JIS standards

Hooked blade terminals, also called lipped blade terminals, are shaped a little differently from blade terminals. They feature an extra lip or hook at the end which ensures they are locked securely on to the part to be connected.

**KableKonnnect** hooked blade terminals are made to JIS standards and are UL certified. They come insulated with PVC. Different color codings are used to denote different wire sizes. The wiring size/gauge and the size of screws determine your choice of terminals.

**MAX OPERATING TEMPERATURE (°C): 80**

**FLAMMABILITY (UL-94): V0**



Item No.	Wire Range AWG/mm <sup>2</sup>		b	L	F	E	D	d1
VHB1-17	22~16 AWG	0.5~1.5mm <sup>2</sup>	.118(3.0)	1.043(26.5)	17	.374(9.5)	.157(4.0)	.075(1.9)
VHB1-17-4.6	22~16 AWG	0.5~1.5mm <sup>2</sup>	.181(4.6)	1.043(26.5)	17	.374(9.5)	.157(4.0)	.075(1.9)
VHB2-17	16~14 AWG	1.5~2.5mm <sup>2</sup>	.118(3.0)	1.063(27.0)	17.5	.374(9.5)	.177(4.5)	.102(2.6)
VHB2-17-4.6	16~14 AWG	1.5~2.5mm <sup>2</sup>	.181(4.6)	1.063(27.0)	17.5	.374(9.5)	.177(4.5)	.102(2.6)
VHB5-18	12~10 AWG	4~6mm <sup>2</sup>	.181(4.6)	1.181(30.0)	17.5	.492(12.5)	.252(6.4)	.142(3.6)