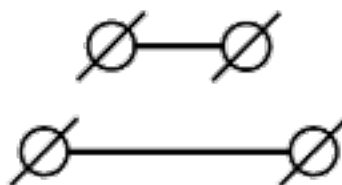
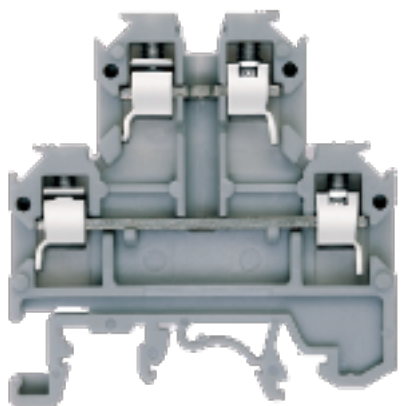


KU2D 4



Approvals



General Data

Type	KU2D 4
Wire Termination Technology	Screw Clamp
Ratings	500 V/24 A/2.5 sq mm/0.4 Nm
GTIN / Harmonize Custom Code	85389000
Standard Packing Qty (in No)	100
Country of Origin	India
Screw Size	M3

Dimensions & Weight

Height (mm)	50.80
Height (inches)	2.00
Width (mm)	50
Width (inches)	1.97
Thickness (mm)	6
Weight For Standard Packing Qty (Kg)	1.25

Material Data

Housing	PA 6,6
Standard Colour	Grey
Other Color Variants	Black, Blue, Green, Khakhi, Red, Yellow

Rated Conductor Size

Stranded Wire - min (sq mm)	0.5
Stranded Wire - max (sq mm)	2.5
Solid Wire - min (sq mm)	0.5
Solid Wire - max (sq mm)	4

Ratings - IEC

Standard	IEC 60947-7-1
Rated Voltage (V)	500
Rated Current (A)	24
Rated Cross Section (sq mm)	2.5
Short Time Withstand Current (kA)	0.30
Rated Impulse Withstand Voltage(kV)	6
Pollution Degree	III

Ratings-ATEX

Certificate No	275
Rated Current (A)	21
Rated Cross Section (sq mm)	2.5

Ratings-CSA

Rated Voltage (V)	600
Rated Current (A)	20
Wire Cross Section - min (AWG)	20

Wire Cross Section - max (AWG)

12

Ratings-uL

Rated Voltage (V)

600

Rated Current (A)

20

Conductor Size - min (AWG)

20

Conductor Size - max (AWG)

12

Accessories

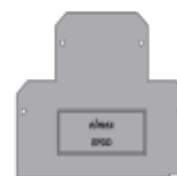
End Plate

EPDD

Height : 41 mm

Width : 50 mm

Thickness : 1.50 mm



Protection Cover

PCK3

Height : 28 mm

Width : 58.35 mm

Thickness : 1 mm



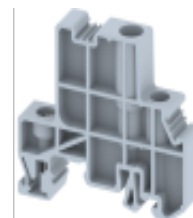
End Clamp

SCUDD

Height : 50 mm

Width : 55.50 mm

Thickness : 10 mm



SCUSL

Height : 41 mm

Width : 47.50 mm

Thickness : 8 mm



Cross Connection Link Assembly

CCLADD

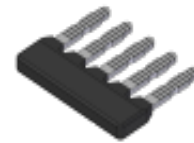
((2W, 3W, 4W, 5W, 10W))



Comb-type Shorting Link

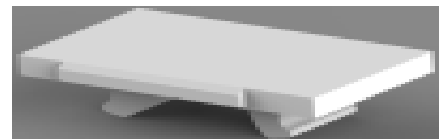
SLC4N

(2 Way, 3 Way, 4 Way, 5 Way, 10 Way)



Marking Label

LABEL KN5.5



Mounting Channel (Standard Lengths 300 mm, 500 mm, 1000 mm)

